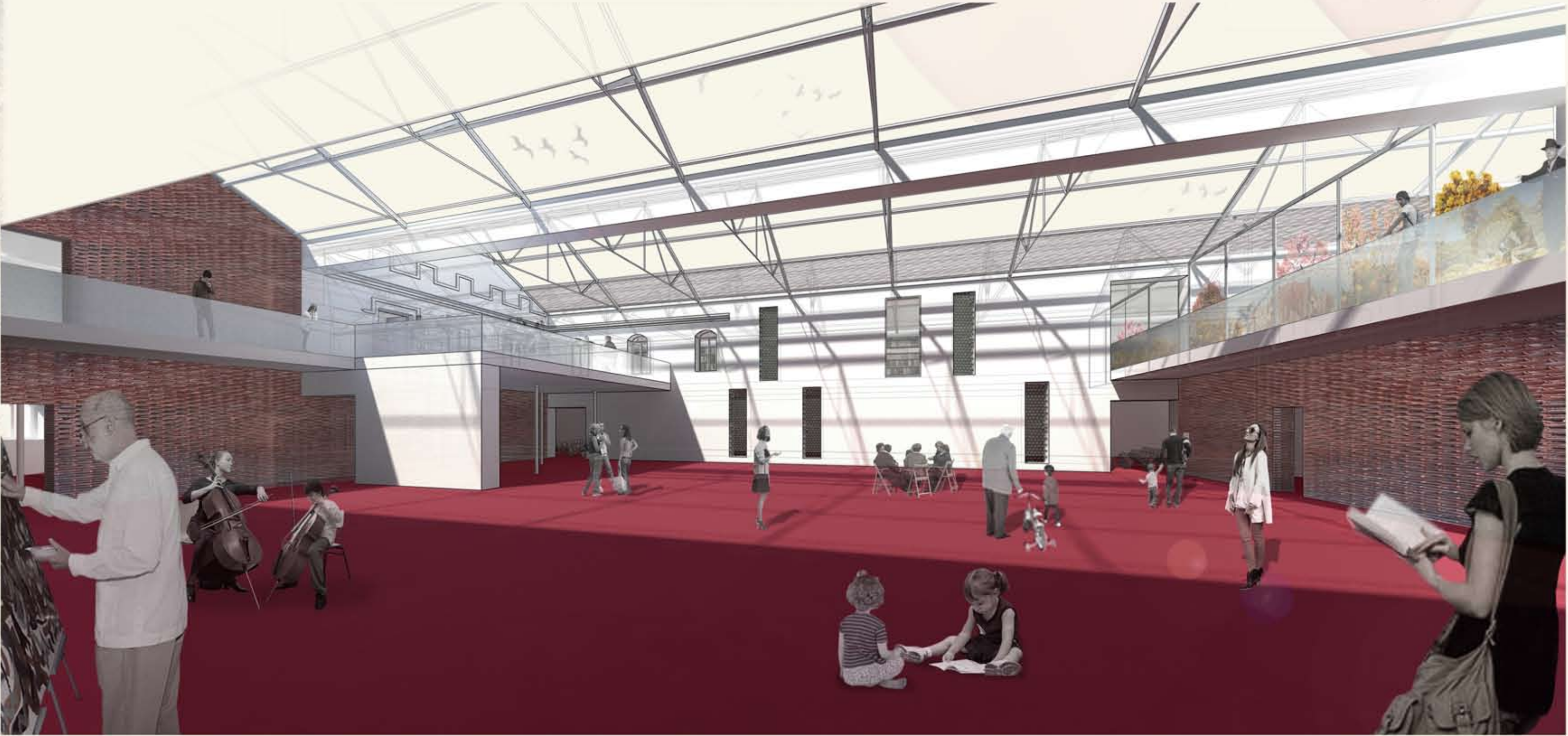
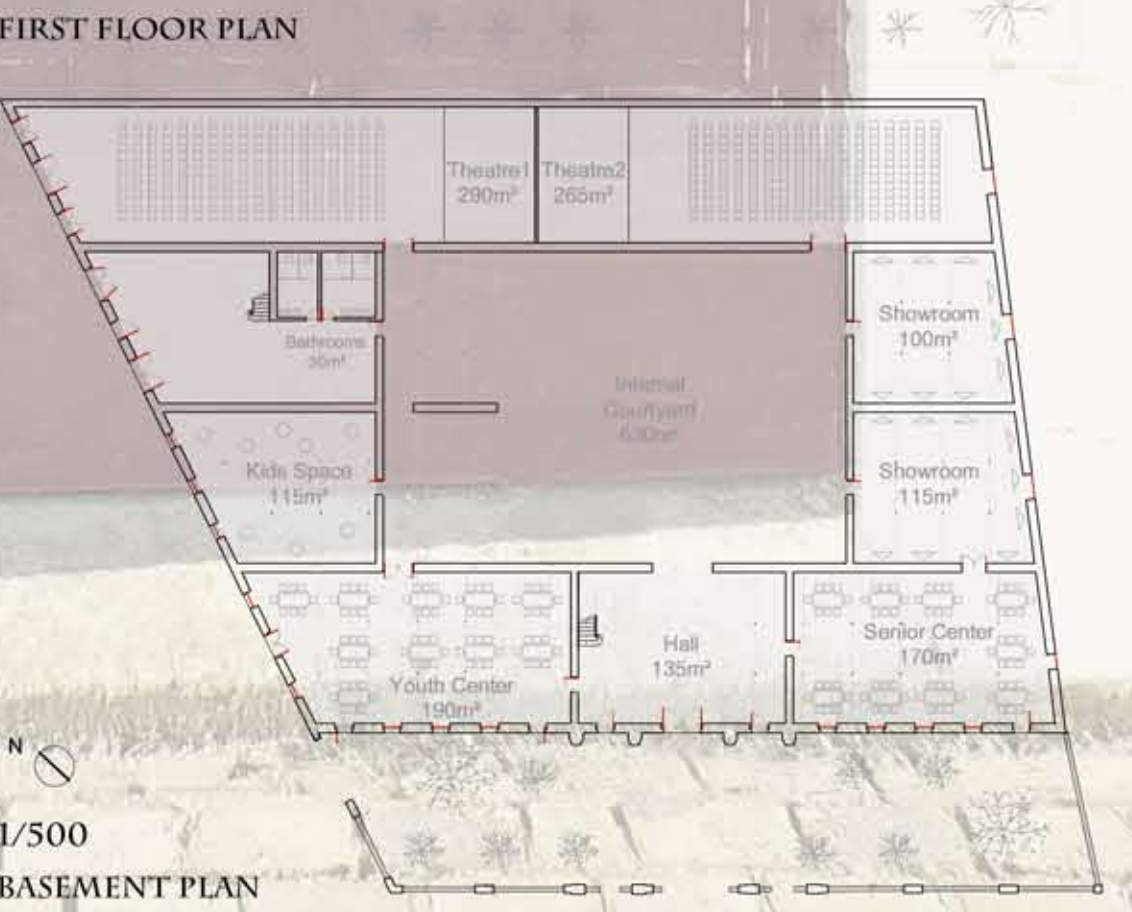
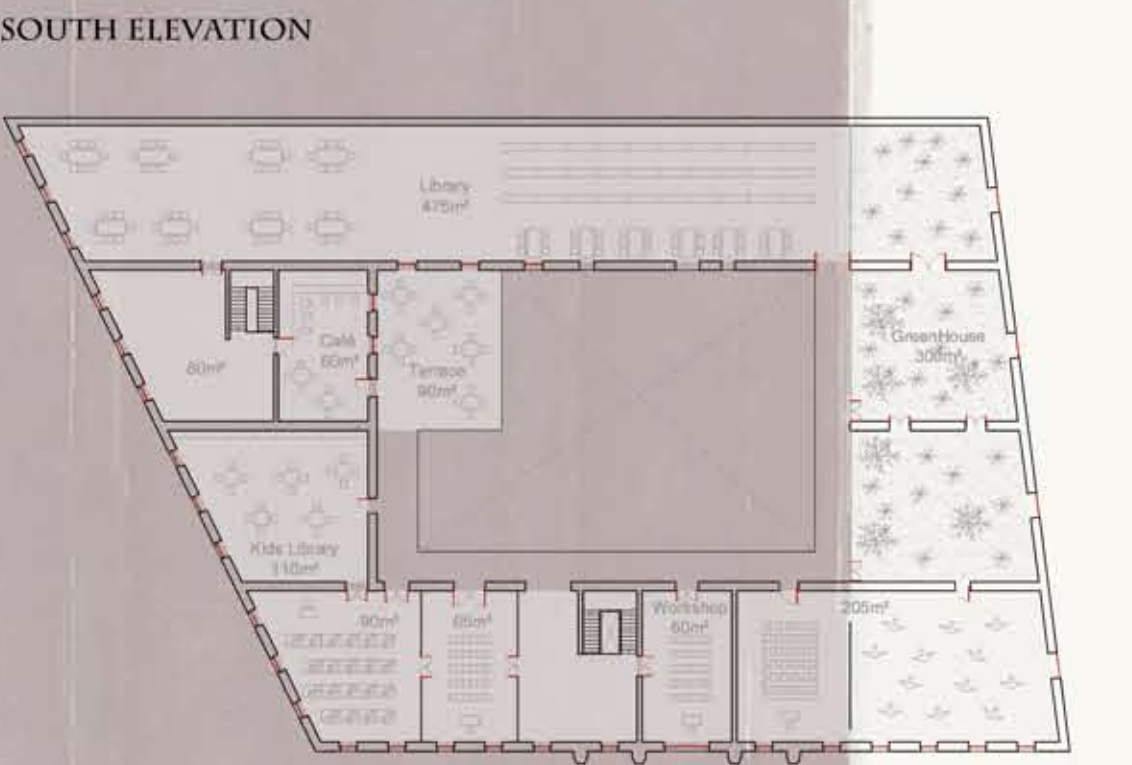


FOUR BIRDS AND A PINK BALLOON

The project tries to give a communal space. A place where young people can go, meet their friends and stay if there is bad weather or just meet and go. A place where someone can arrive and read something, it could be the newspaper or a book, doesn't matter. But after that, or meanwhile, have a coffee, and meet someone that there is a lot of time that you don't see. A place where elderly people can go and expend their free time. They can learn something, or stay with the friends (old friends or a new one). Actually elderly are not very different to young people, they want a place to stay, sometimes alone or sometimes with some company. A place where a couple can go to se a film, or hear the music that the new local band is going to play. Or a place where you can take your children to play with their friends or to learn in the kids library. The project is a relation space. A place where different people can do different activities every day. In conclusion, the project tries to create a new center of life and activities in the district, going back in time and interpreting the "building footprint" and transforming it back into the "district heart", now through leisure activities. Remembering the work activity that the building had had time ago. The Maison Calvet is turning into a meeting point. The old cellar is opening itself to the people. A dark space to produce the wine now is a place where you can go and drink some watching the sun through the roof while music is sounding.

Back to the old building and his typical construction, it has worked into the original volume, modifying the roofs but leaving the same height and shape. Skylights have been closed making the sun enter from the façades and the translucent roof of the central space. It have been mainly maintained the old stone walls which constitute the main structure, and façades, also the main stairs and the main courtyard or terrace which is the new café terrace but preserving and restoring the old walls. In addition, the plane tiles that have been removed to do the new translucent roof have been used to build the new walls. It have been preserved some wooden trusses and added some steel trusses in the internal courtyard. The façades have been maintained after a restoration and the woodwork have been painted in red in reference to the wine and remembering the colour that had the main door. Finally, the main zone in the building is the internal courtyard which function is not also light all the spaces, but also is a distribution space, a meeting point, a relaxing area, a free performance space, etc. And when you're inside enjoying the rays of light, your unique relationship with the outside world is birds and balloons floating...



271JLR

SCHEMATIC VIEW OF THE PROJECT

The roof of the internal courtyard is a translucent skin that allows the daylight enter through it and illuminate the high ceiling central space.

The roof of the courtyard is supported by a new steel truss that imitate the way of work seing in others cellars in the district.

Skylights have been closed in order to define an homogeneous roof in the original plane tiles. Offering to the pedestrians the image very similar to the orinal one.

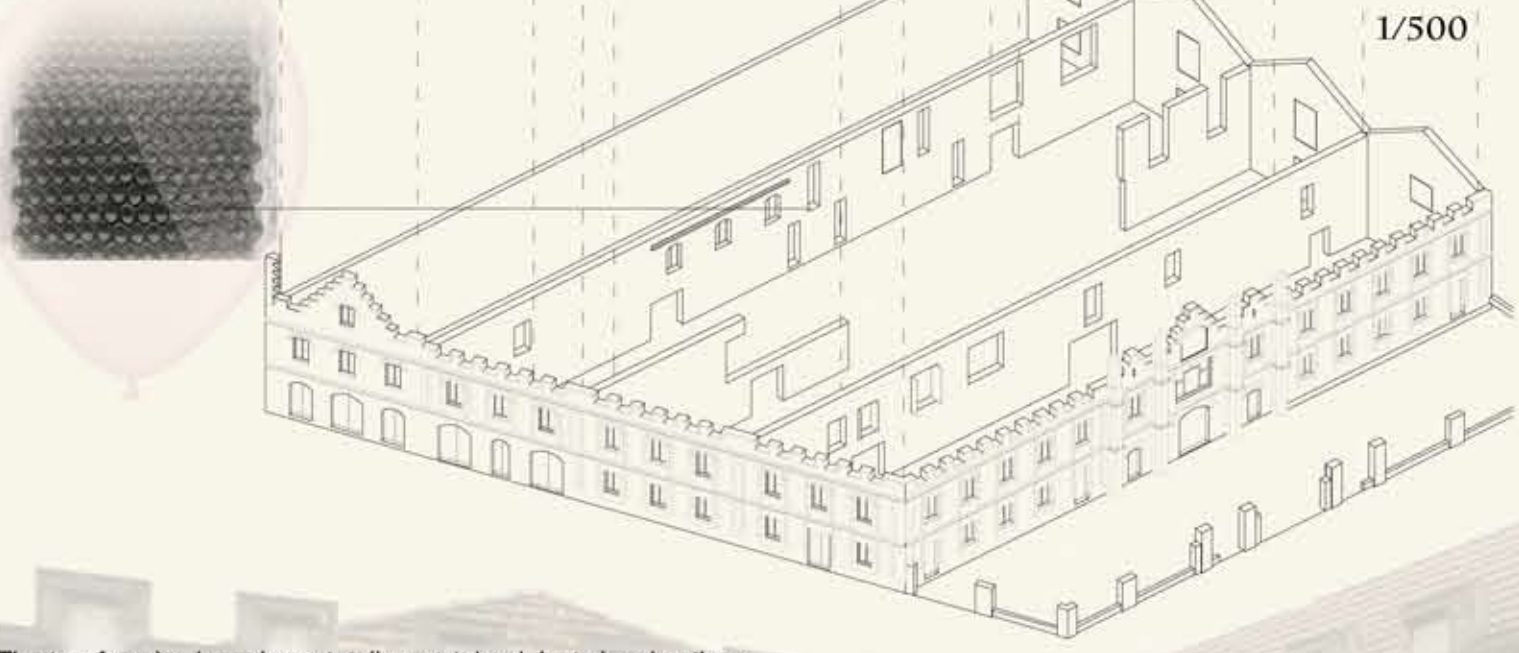
Another reference to the original building is the composition of the new walls composed with the ceramic tiles that we have removed from the old roofs. Doing that the hall that now has a translucent roof keep the essence of what it had over it.

Ceilings has been demolished in an attempt to multiply the space of the first floor leaving the view of the wooden trusses that have been restored seleccting the best preserved. With this solution the perception of the space has absolutely changed but maintaining the structure of the building.

The first floor is the most modified part of the building, the walls of the old hotel has been knocked down creating big spaces that can recive the new program.

The saloons and the tasting room have been respected and the central terrace has been transformed in an internal terrace that recives the light filtered by the roof and opening itself to the great hall mantaining two of their façades.

The steel pillars of the basement has been partly maintained, ordering the different spaces. The stairs have been structurally modified in order to support their new condition.



The two façades have been totally maintained, just cleaning them, changing the glass of the windows and painting all the doors and windows in a burgundy tone, making the people remember the old usage of the building with this reference to the wine.

The East dividing wall has new holes to let the light enter in the morning and the entrance garden has been treated as a hall, giving the link between the street and the building.