

HABITER SUR LE TOIT

Il s'agit de créer un espace d'habitation surélevé dans un îlot pour bénéficier de vues en perspective sur l'ensemble d'îlot, en aménageant comme espaces privatifs les jardins en terrasse.

PROGRAMME:

15 maisons individuelles 2100 m² (SHON)
 4 Ateliers: 1200 m²
 2 parking collectifs: 14 places
 5 parking privés

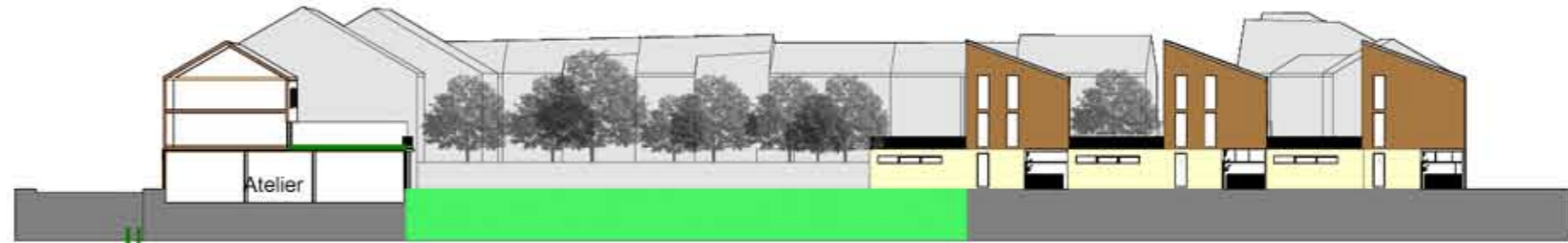
SURFACE TOTALE DE GRAND PARCELLE: 5100 m²

SURFACE TOTALE DE CONSTRUCTION: 3300 m²

DENSITE : 0.64



VOLUMETRIE DU PROJET



COUPE 1 1/500



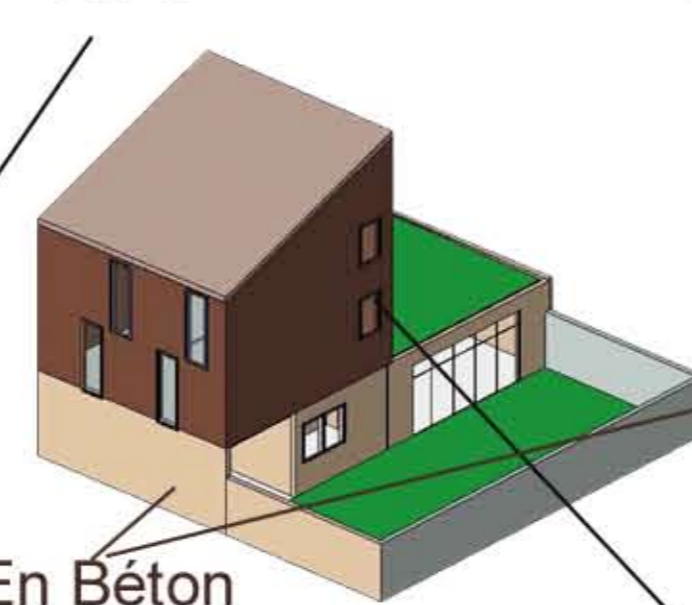
COUPE 2 1/500



- Voie publique
- Espace vert collectif
- Jardin privé
- Passage piéton
- jardin privé surélevé

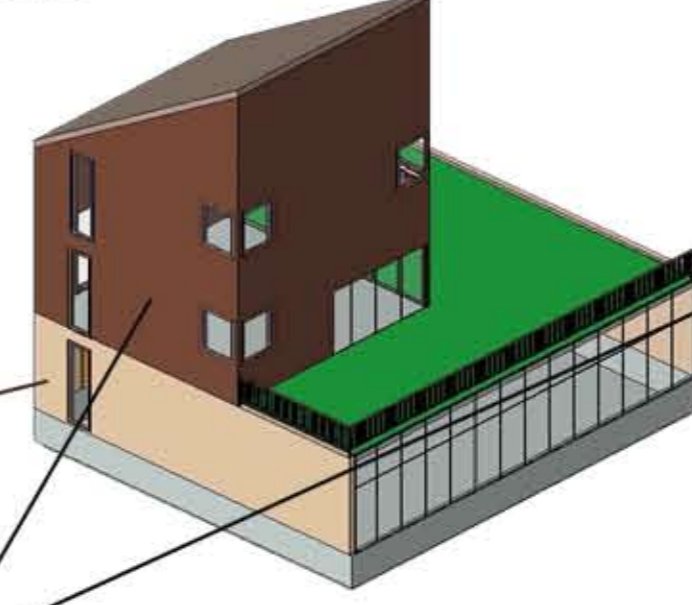
PLAN DE MASSE 1/2000

TYPE 1



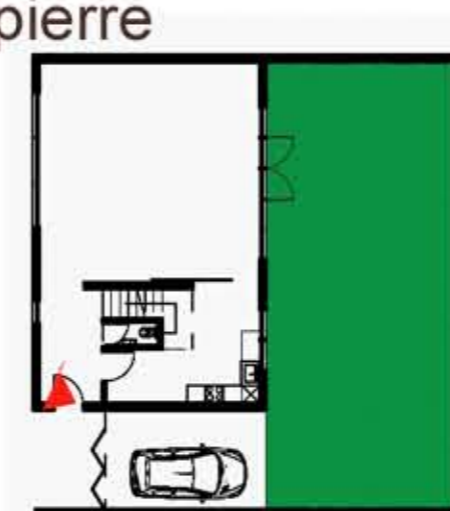
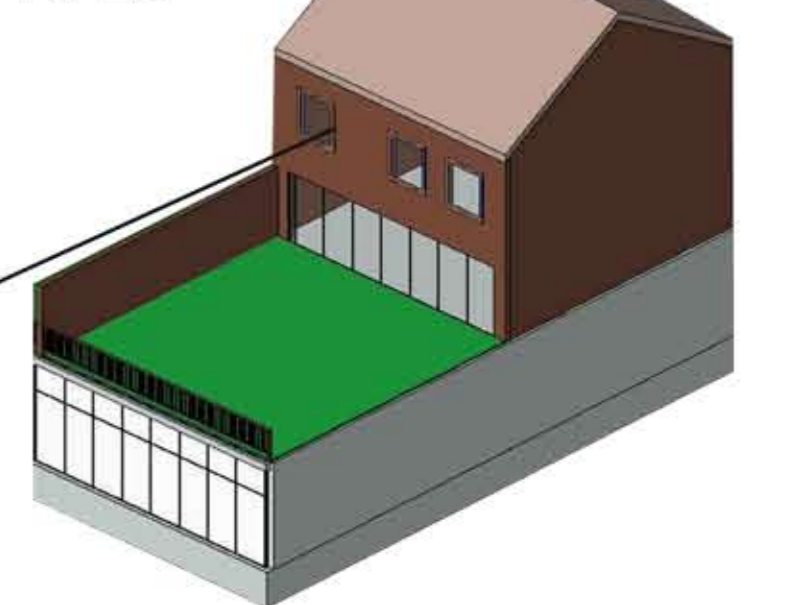
En Béton
couvert
de pierre

TYPE 2

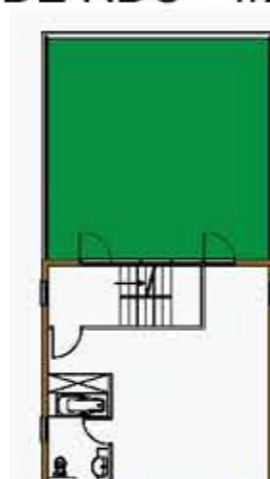
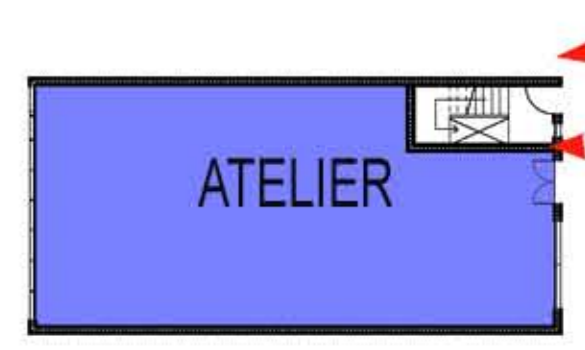
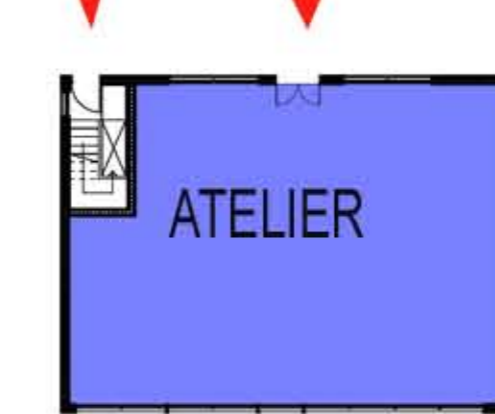


Construction en BOIS

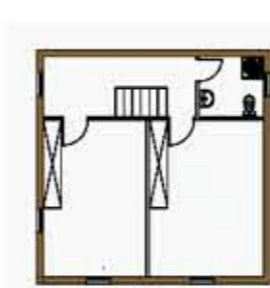
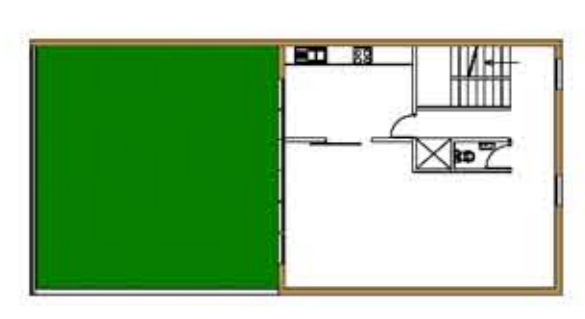
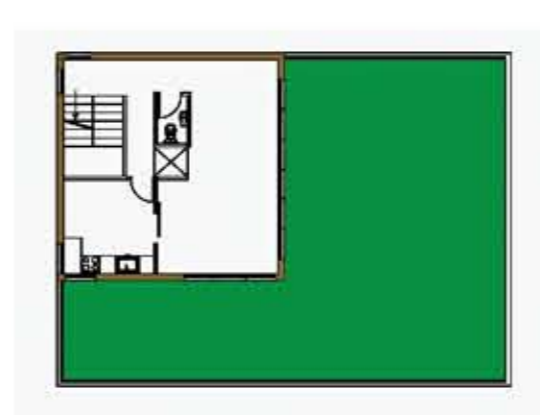
TYPE 3



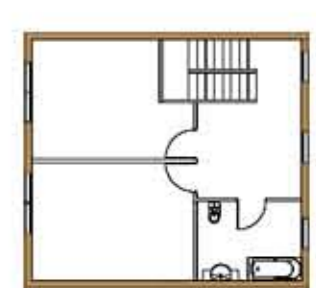
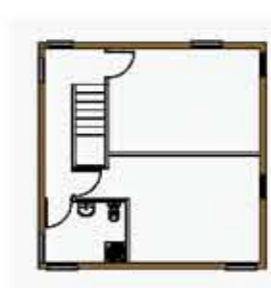
PLAN DE RDC 1/250



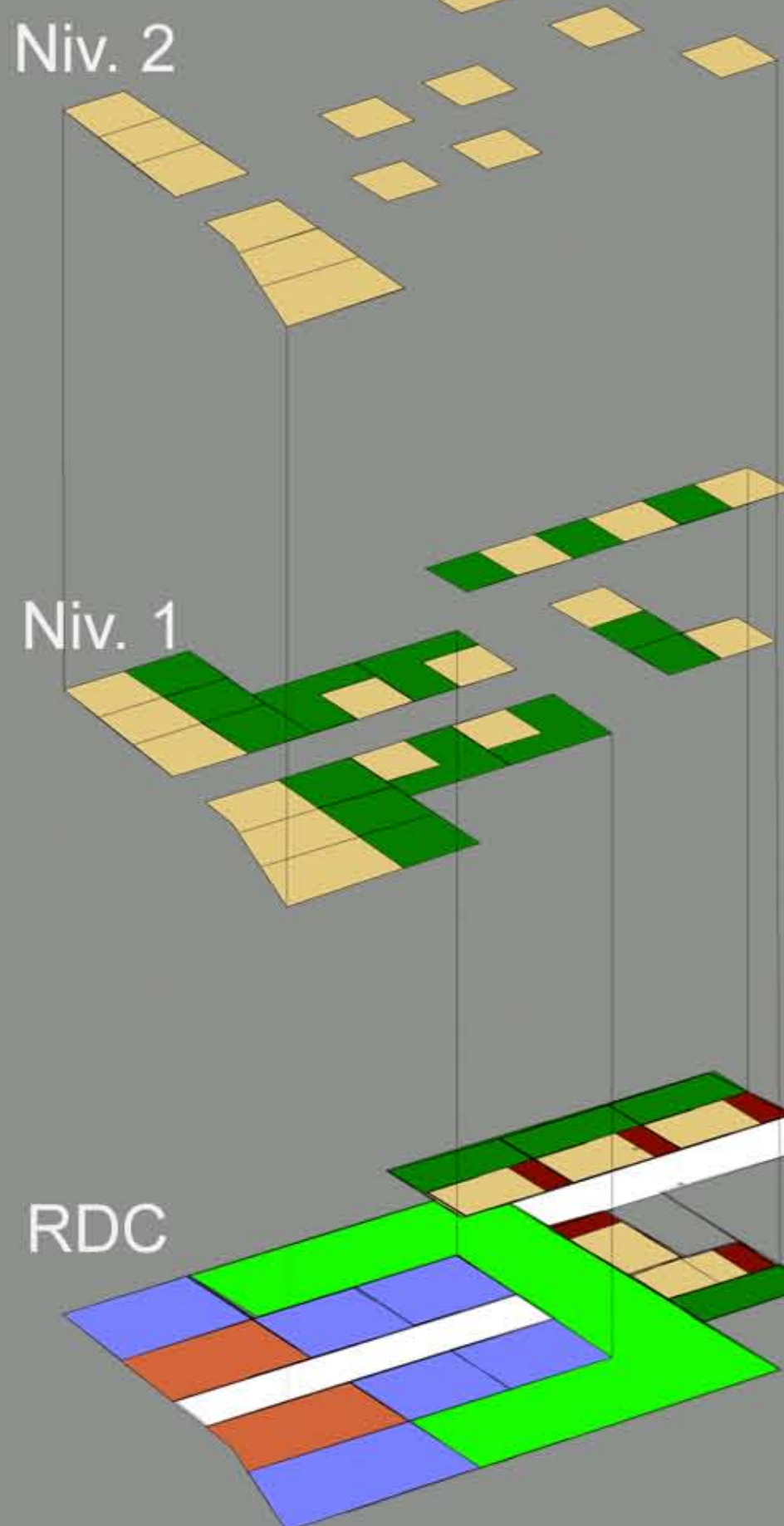
PLAN DE 1er ETAGE 1/250



PLAN DE 2eme ETAGE 1/250



PERSPECTIVES



- Logement
- Jardin privé
- Jardin collectif
- Atelier
- Parking privé
- Parking collectif
- Voie public

SCHEMA DE FONCTION

