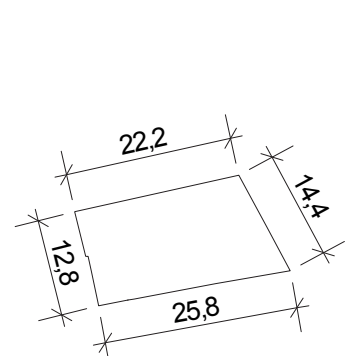


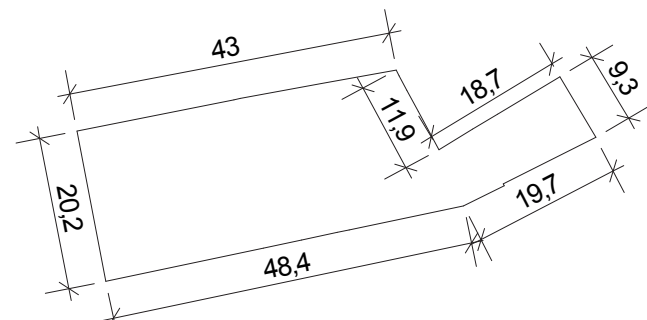
ILOT NERAC: INVESTIR LE PARCELLAIRE EXISTANT



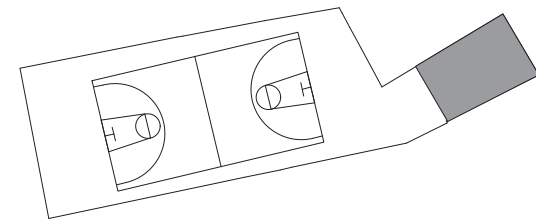
316 m²



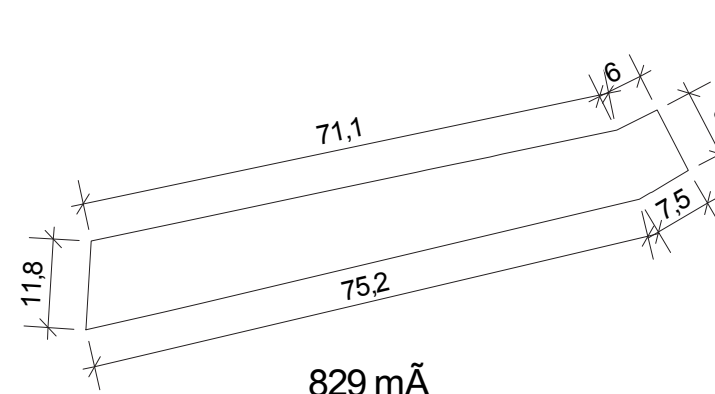
SURPRISE



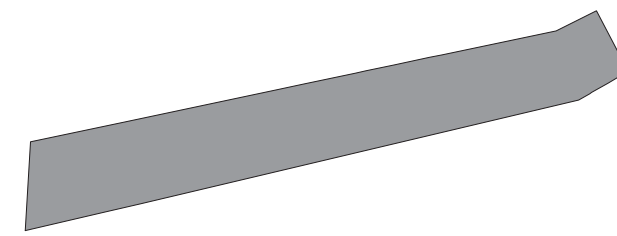
1074 m²



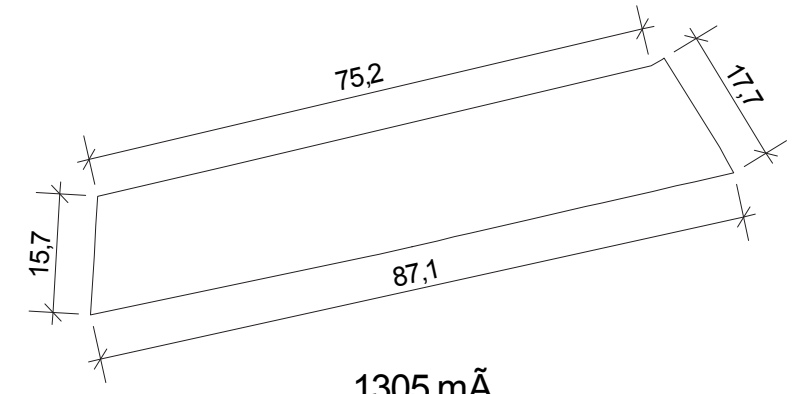
LOGEMENTS COLLECTIFS
+
TERRAIN DE SPORT PUBLIC



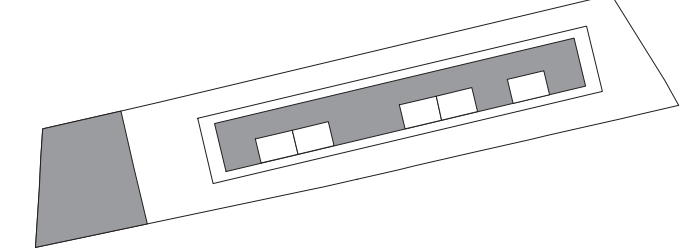
829 m²



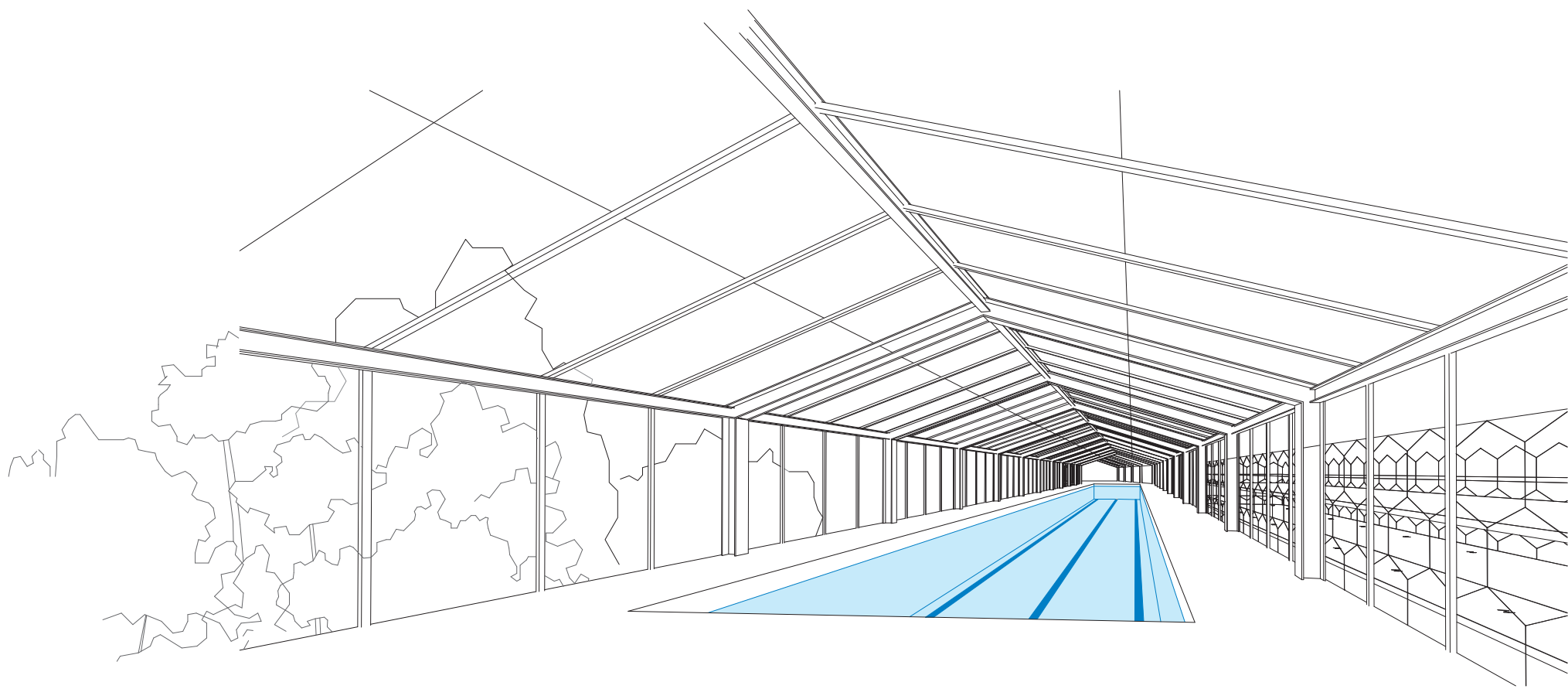
PISCINE PUBLIQUE
+
PARKING COLLECTIF



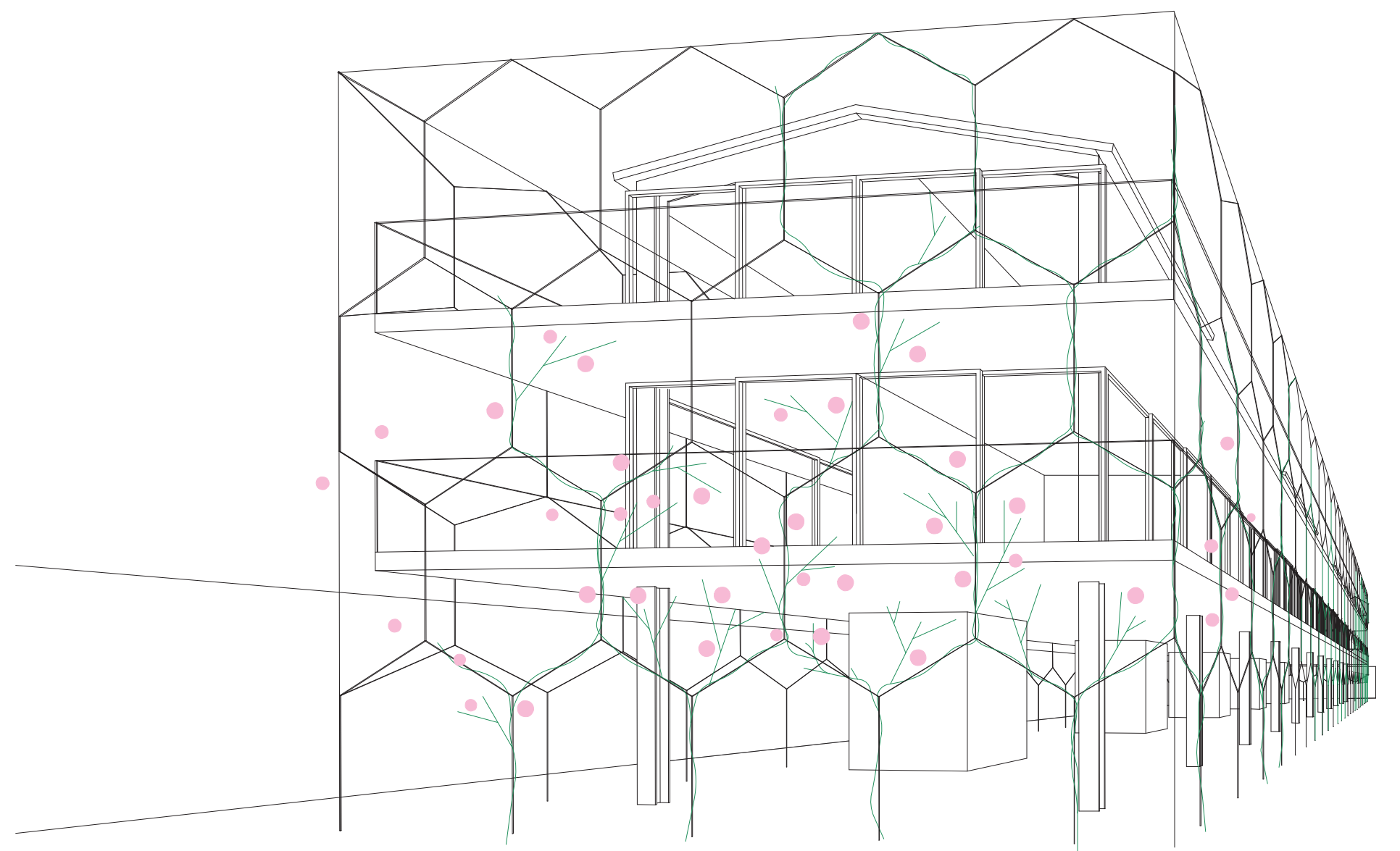
1305 m²



LOGEMENTS COLLECTIFS + COMMERCE
MAISONS EN BANDES

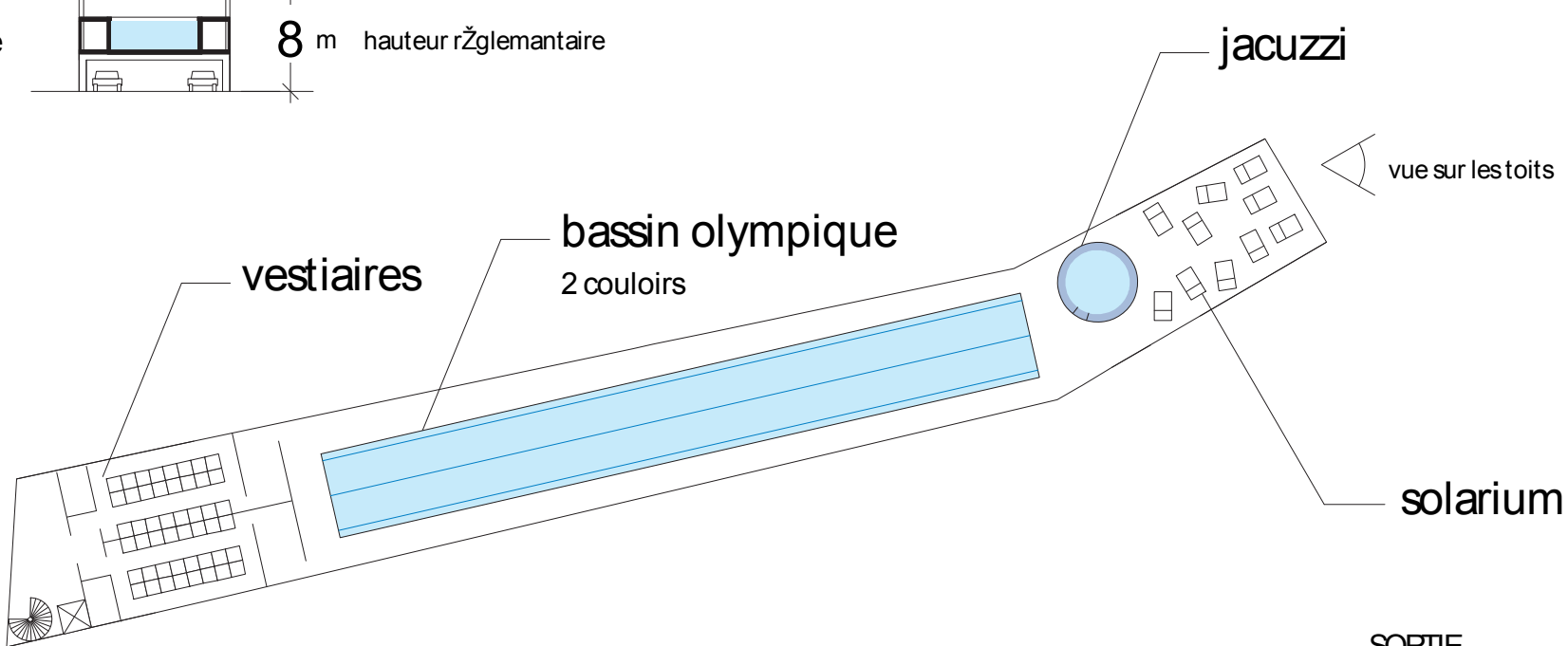
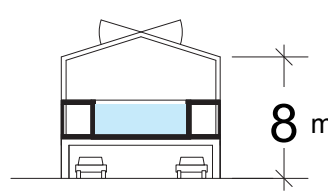


piscine publique + parking collectif

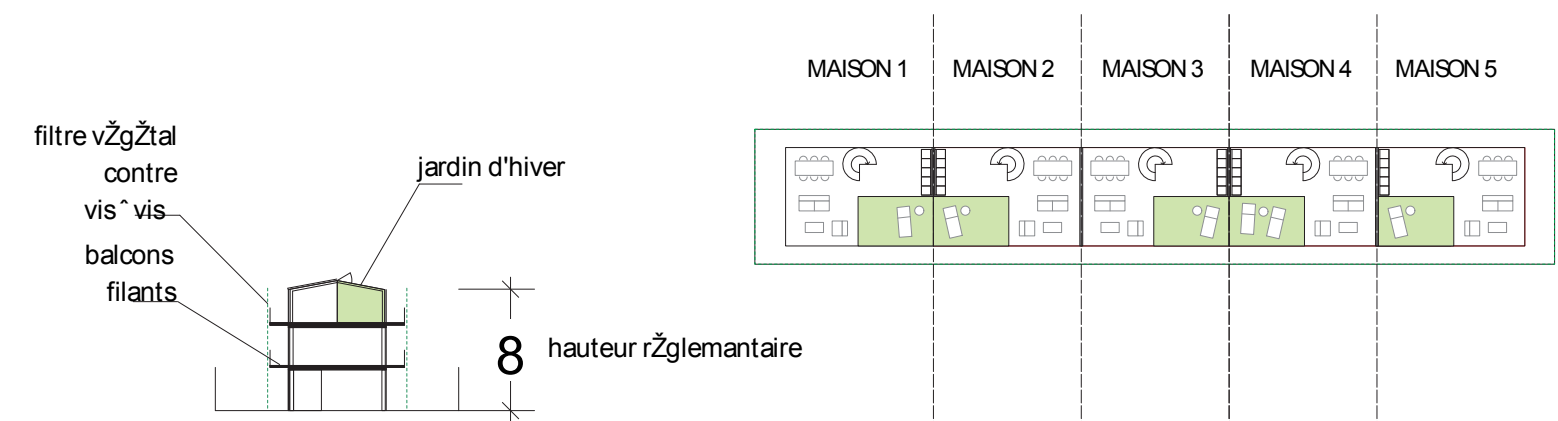


maisons en bande + espaces partagés

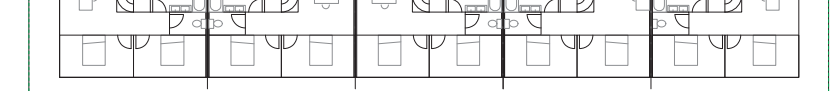
R+2 : niveau piscine
R+1 : niveau technique
RDC : parking



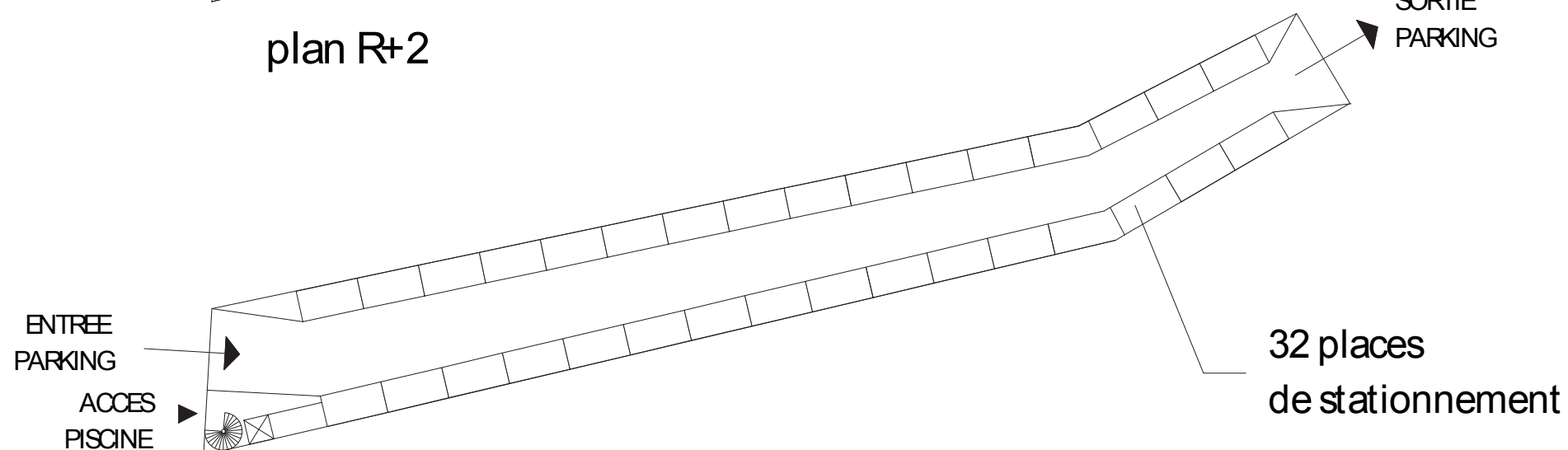
plan R+2



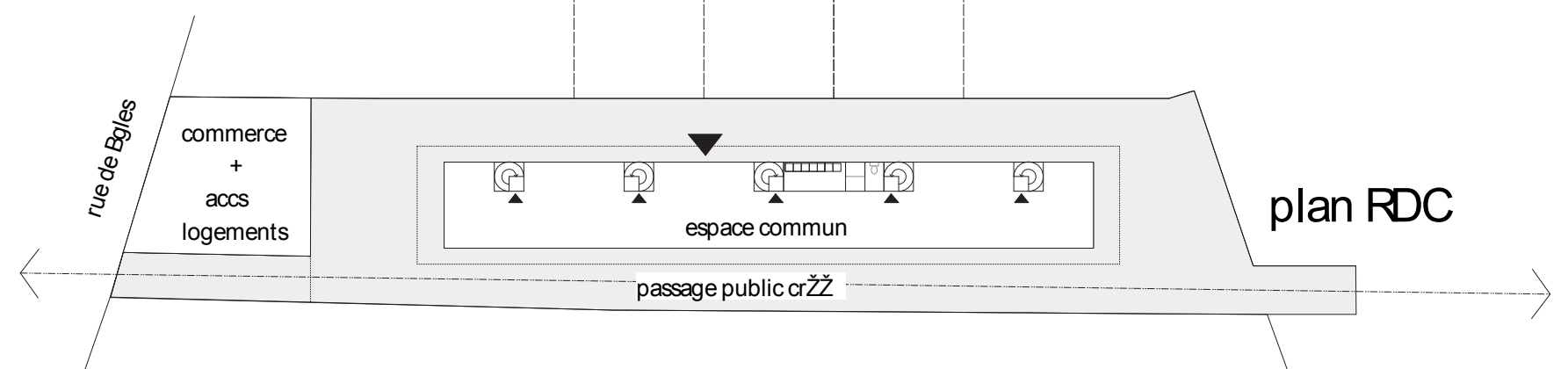
plan R+2



plan R+1



plan RDC



plan RDC

